

Estonia
Renovation
(RC construction)

Kolde 88 Renovation Project

Structure: RC
Story: 5 story
Age of building: 52 years
Renovation: External insulation



Design
Anmeri Architect

<https://www.anmeri.ee/>



Construction
JapEst

<https://japest.com/en/>

Renovation of a Soviet era apartment



Before: The building was over 50 years old and was showing signs of deterioration, so improving the living environment was a challenge.



After: The Nichiha EX Series was installed for exterior insulation renovation. The joints between the panels are not noticeable, so it is highly resistant to rain and have a beautiful finish.



One of the best solution for "energy-efficient renovations apartment buildings"

Nichiha: Please tell us briefly what prompted you to renovate this apartment.

Ans: For a long time now, apartment buildings in Estonia have been undergoing energy-efficient renovations. We have been operating in the apartment building renovation design market for 15 years, and this was a fairly routine order for us.

Nichiha: From the beginning, did you plan to use our exterior wall materials for your renovation? If you have considered other materials, please let us know what they were and how you selected them.

Ans: The initial material choice by the client

was MARMOROC facade stone, but the city government did not approve of this material and demanded a finish that resembled stucco more closely.

Nichiha: What was the deciding factor that ultimately led you to choose our exterior wall materials?

Ans: The goal was to achieve an exterior surface with joints that were as less visible as possible. Since I had previously designed a larger apartment building with Nichiha panels, I already had the relevant experience.

Nichiha: I have heard that external insulation

work was also carried out as part of the renovation of this apartment. How do you feel about the compatibility of our exterior wall materials for external insulation renovations?

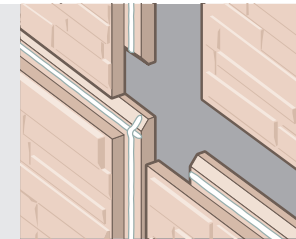
Ans: For installing additional insulation on buildings with a ventilated facade system, this is one of the best solutions. The Nichiha panel is mostly without joints and is quite resistant to precipitation. This means that rainwater does not enter the ventilation gap.

Nichiha: How long did the construction take to complete? Compared to other materials, how easy is it to install our exterior wall materials? (Does it help to shorten the

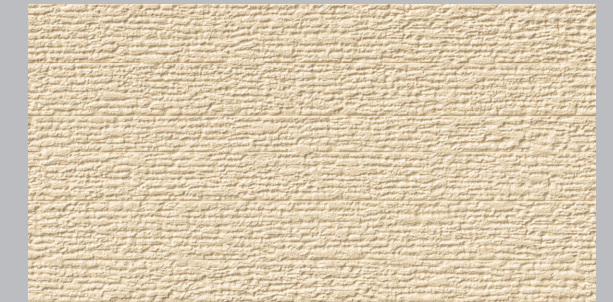
Clients are very satisfied with the "design with inconspicuous joints"



Four-side Tongue and Groove
By using 1,820mm panels, it is possible to create a neat and beautiful wall surface with inconspicuous seams.



NICHHA Panel



EX Series EFF117

Length 1,820mm
Fire Safety A2-s1, d0



EX Series EF5362

Length 3,030mm
Fire Safety A2-s1, d0

Advantage is relative independence from weather conditions.

construction period?)

Ans: The facade work lasted for 3 months, but since other reconstruction work was also carried out, the overall construction period was, of course, longer. The advantage of Nichiha facade system is its relative independence from weather conditions.

Nichiha: What do you pay attention to when installing our exterior wall materials?

Ans: As with any other system, it is essential to strictly follow the manufacturer's guidelines.

Nichiha: What was the reaction of the

designers and clients to the finished product once it was completed?

Ans: The client was very satisfied, and to my knowledge, the cost was also lower than with the client's initial material choice.

Nichiha: Regardless of whether it is a residential or non-residential project, if you have a project requiring exterior wall renovation, would you consider our exterior wall materials?

Ans: Yes, definitely.

Nichiha: What do you find attractive about our exterior wall materials?

Ans: An almost seamless exterior surface and a wide design selection of materials. A well-thought-out installation technology.

Nichiha: Thank you for sharing your story with us. We look forward to using your services in other projects.

For more information, Please check our

 Web-site. <https://www.nichiha.co.jp/global/>
 Facebook <https://www.facebook.com/NichihaGlobal>
 LinkedIn <https://jp.linkedin.com/company/nichiha-corporation>

Designer's Voice

When renovating exterior insulation, the Nichiha panel has few joints, so it is a material that can be expected to produce a beautiful finish and improve the durability of the building with the Rain screen system. I would definitely like to use Nichiha again.

Constructor's Voice

One of the advantages of Nichiha panels is that they can be installed regardless of the weather, thanks to their well-thought-out construction. I am more satisfied with them than with other exterior materials.