

# NICHIHA EX Series

CASE STUDIES  
2025.1

For more information, Please check our

 Web-site. <https://www.nichiha.co.jp/global/>  
 Facebook <https://www.facebook.com/NichihaGlobal>  
 LinkedIn <https://jp.linkedin.com/company/nichiha-corporation>

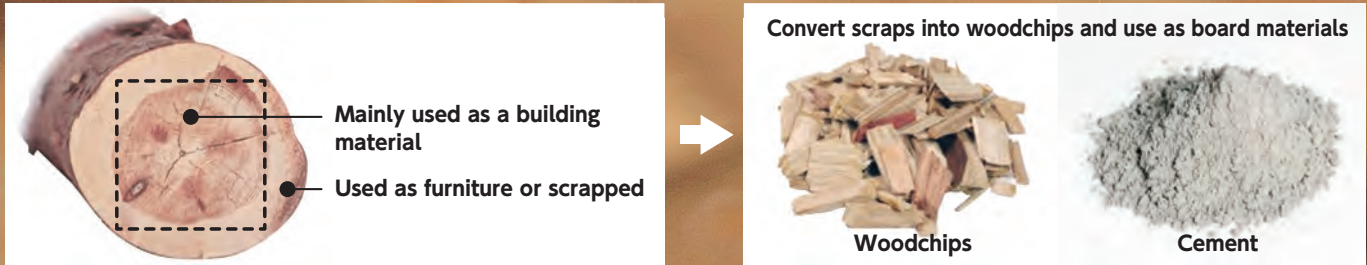
2025.1

 **NICHIHA CORPORATION**



# What is NICHHA EX Series?

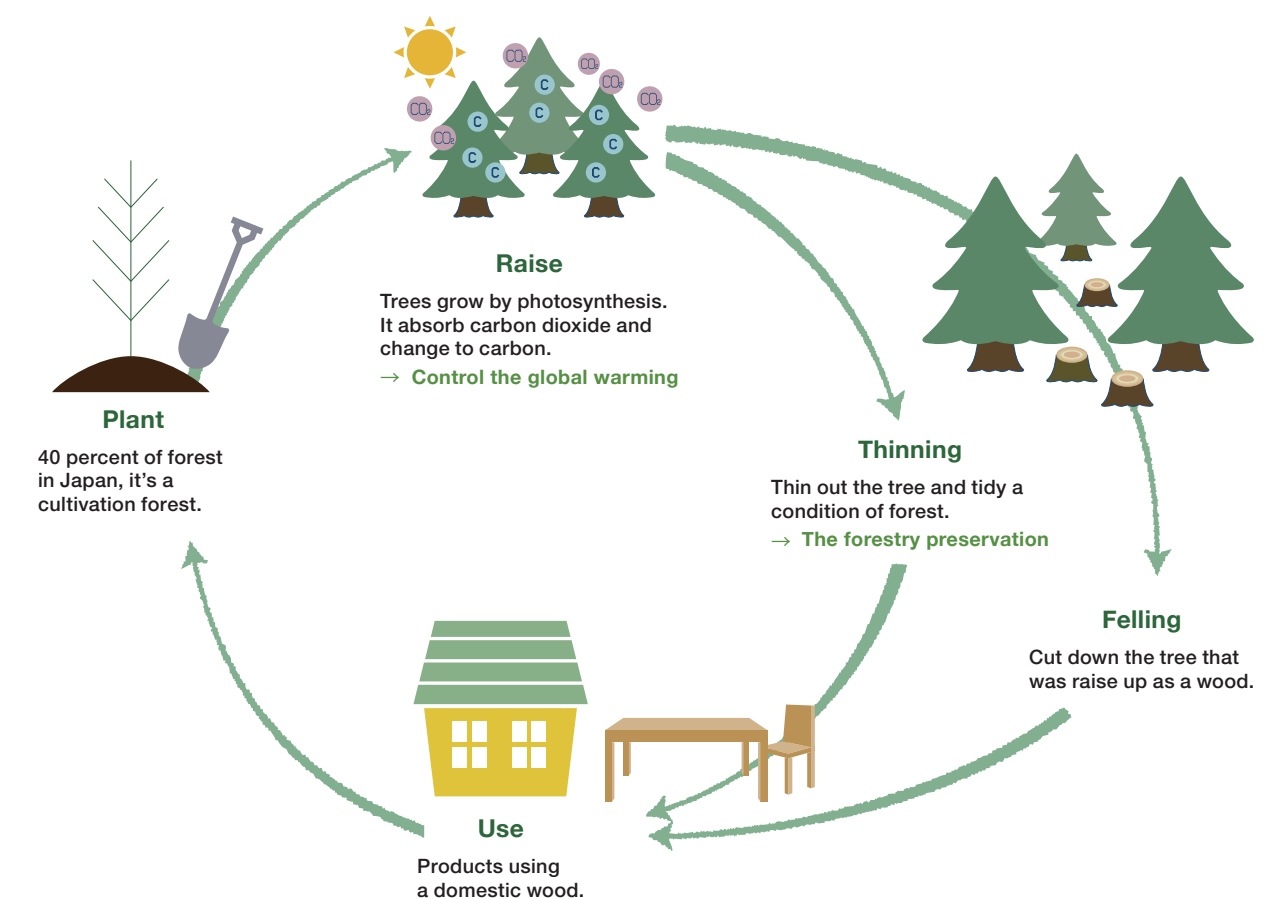
## Material of Fiber Cement Board




# CO<sub>2</sub>

- trapping exterior wall material

Contributing to global environmental protection with cladding panels

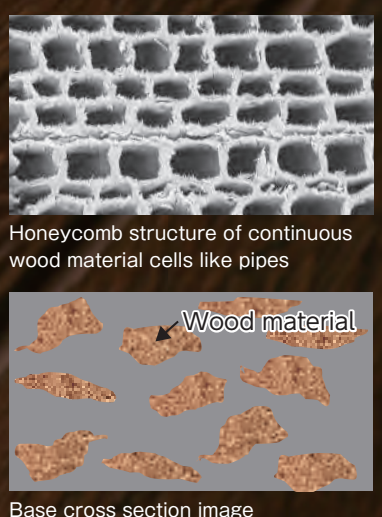
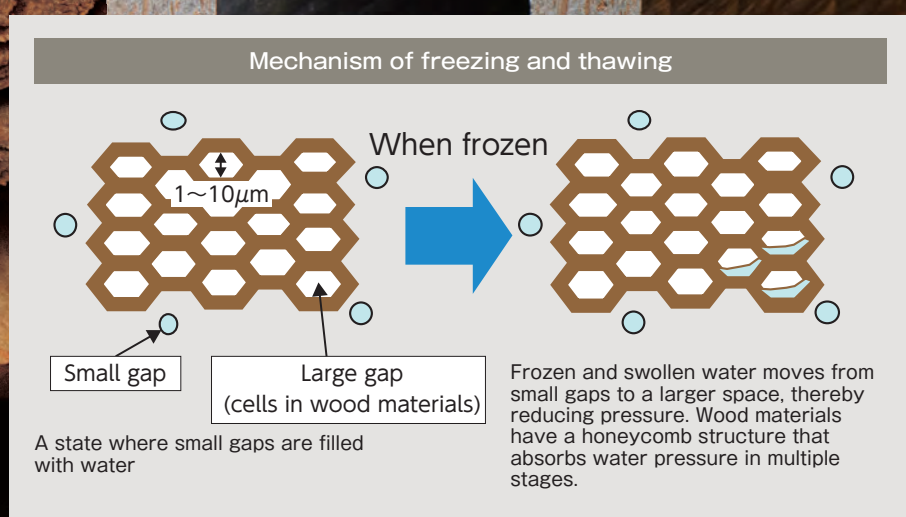


NICHHA EX Series panels are about more than looking good - we want to make sure that our processes help our planet and customer. For starters, we're proud that NICHHA EX Series panels are awarded as an eco-friendly product. Comprised primarily of fly ash and wood chips, our products divert waste and put it to practical use. We also have a long history of conserving resources and employing manufacturing best practices. When you use NICHHA EX Series panels, you know that you're using a product that stands with your aesthetic and your values.

 Offset siding is an exterior wall product made by utilizing domestic wooden chips, corresponding to a lot of our product lines.

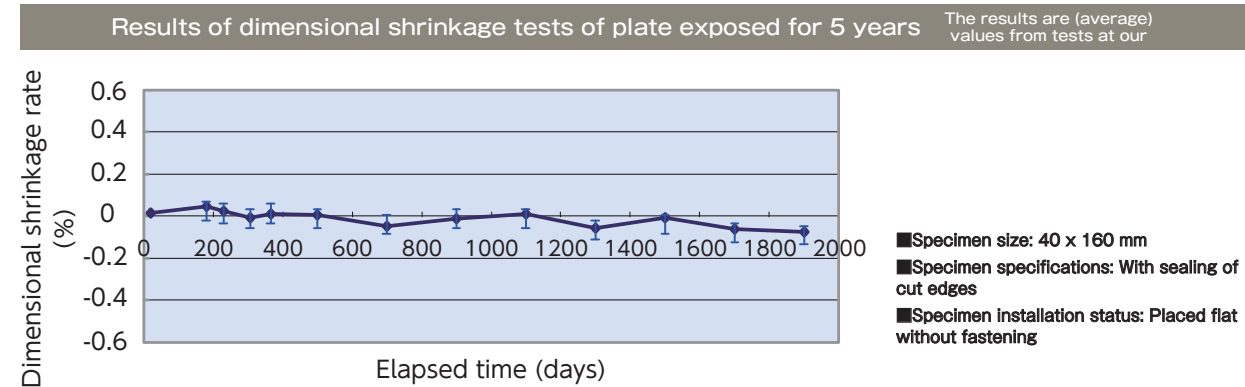
## Characteristics of NICHHA EX Series

### 1 Frost Damage Resistance

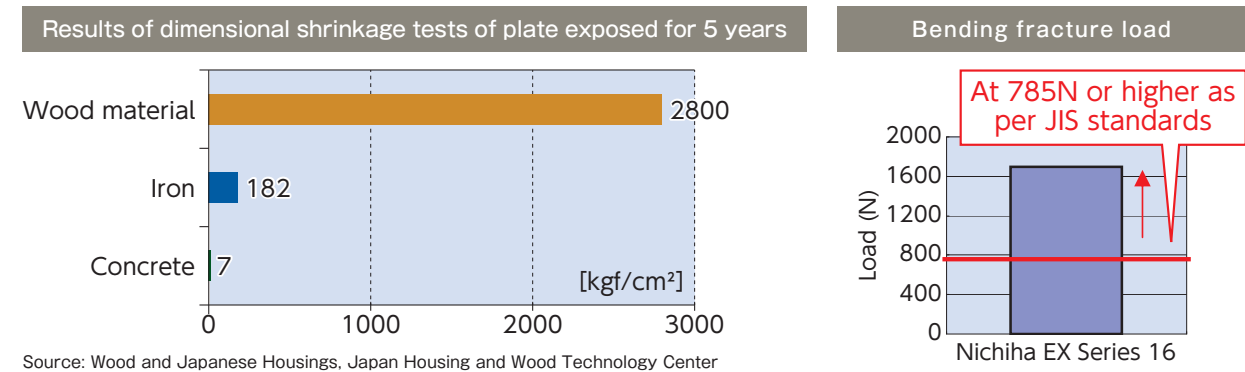




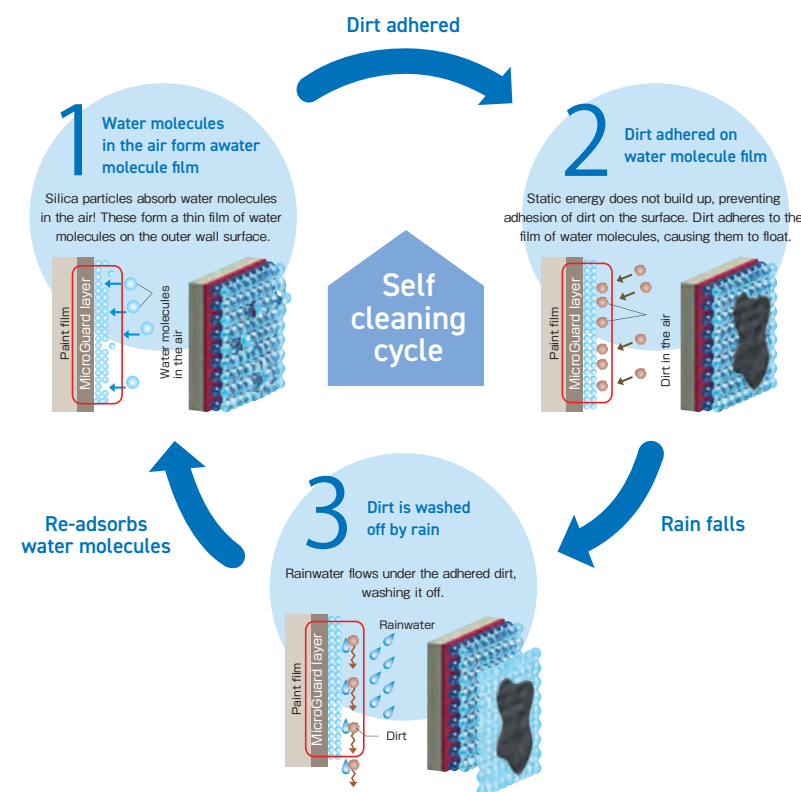
## 2 Dimensional Stability



## 3 High Strength



## 4 Self Cleaning



### What is NichiGuard?

An outer wall material having a self-cleaning function (anti-stain function, or dirt-removing/preventing function). Products bear the following mark.



### Caution

NichiGuard effectively prevents staining by exhaust gases, smoke, dust, and soil; however, it may not show satisfactory performance in an environment with large amounts of these substances.

Also, it has less effect on rust and dirt with high density and viscosity. Please check and clean the outer walls frequently.

## 5 Fire Safety

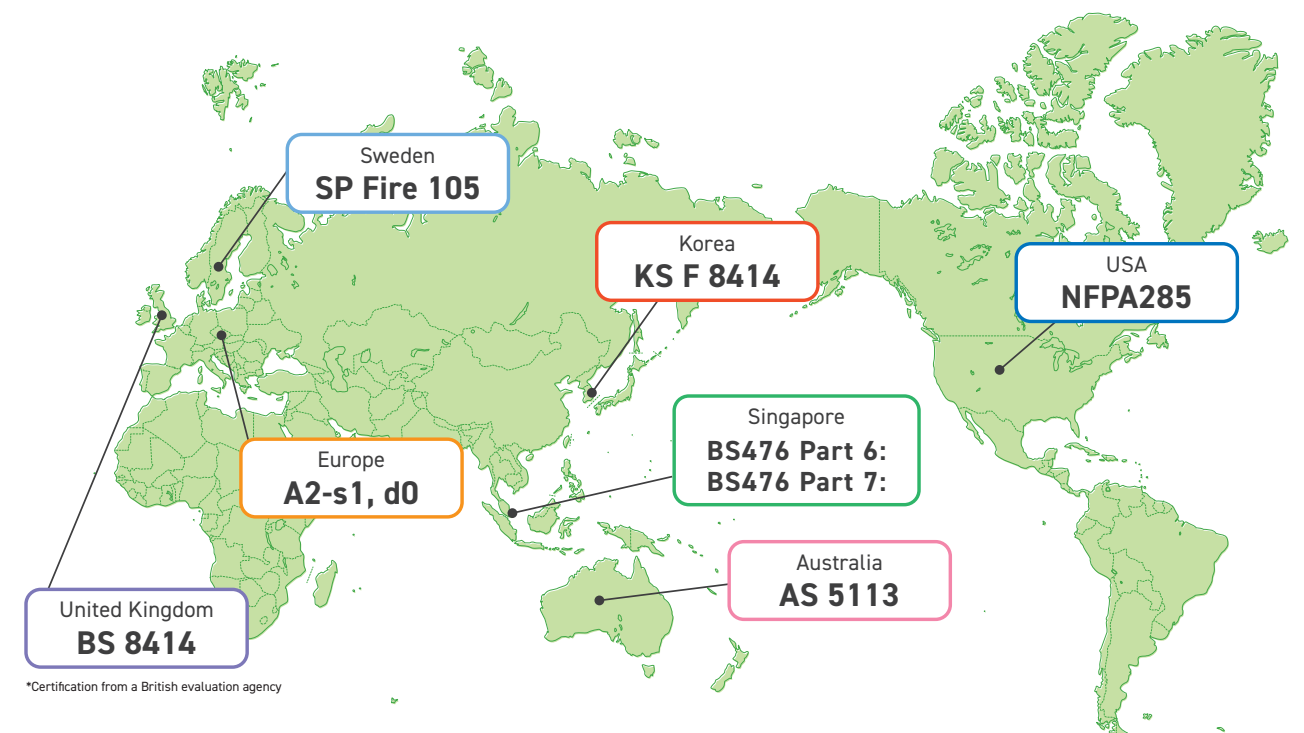
### Achieve Fire Compliance with EX Series Panel

Fire safety and compliance become a significant issue for the construction industry on the back of several tower fires which have attributed highly combustible aluminum cladding as a significant contributor to the spread of fire. More than ever, all stakeholders within the building process must be more accountable and informed when specifying non-combustible cladding products and systems.

NICHIHA EX Series is deemed to be non-combustible as it is classified as A2-s1,d0 in the European Reaction to Fire classification system.\*

In addition, systems using NICHIHA EX Series panels for their facade were tested in various countries. It is notable that the system including NICHIHA EX Series became the first fiber cement facade product which passed one of the most severe facade testings in the world, the Australian fire propagation testing and classification (AS 5113).

\*Note: Not all the panels are classified as A2-s1,d0





# EX Series

## 1820

### EX 1820 Dry-joint Finish

The seamless specification provides a clean look around openings and at the outside and inside corners.

#### ■ Difference in the finish of Dry-joint installation

	Sealant joints	EX 1820 + Dry-joint finish
External Corner	 <p>Sealant joint</p>	 <p>The special accessories makes a seamless joint finish.</p>
Internal Corner	 <p>Sealant joint</p>	 <p>Special backing strip creates a less unevenness with a natural finish.</p>

※Panels with SKU numbers beginning with EDM, EFM, EJM, ETM, EQS can not use Dry-joint finish installation.  
 ※Sealing may be required depending on the area being installed.

### Size Differences

#### EX Series 1820

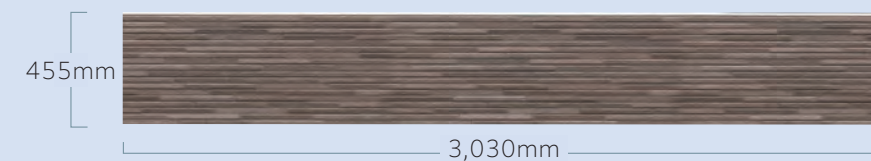
Dimensions: 455mm[W]×1820mm[L]  
 Thickness: 16/18/21mm



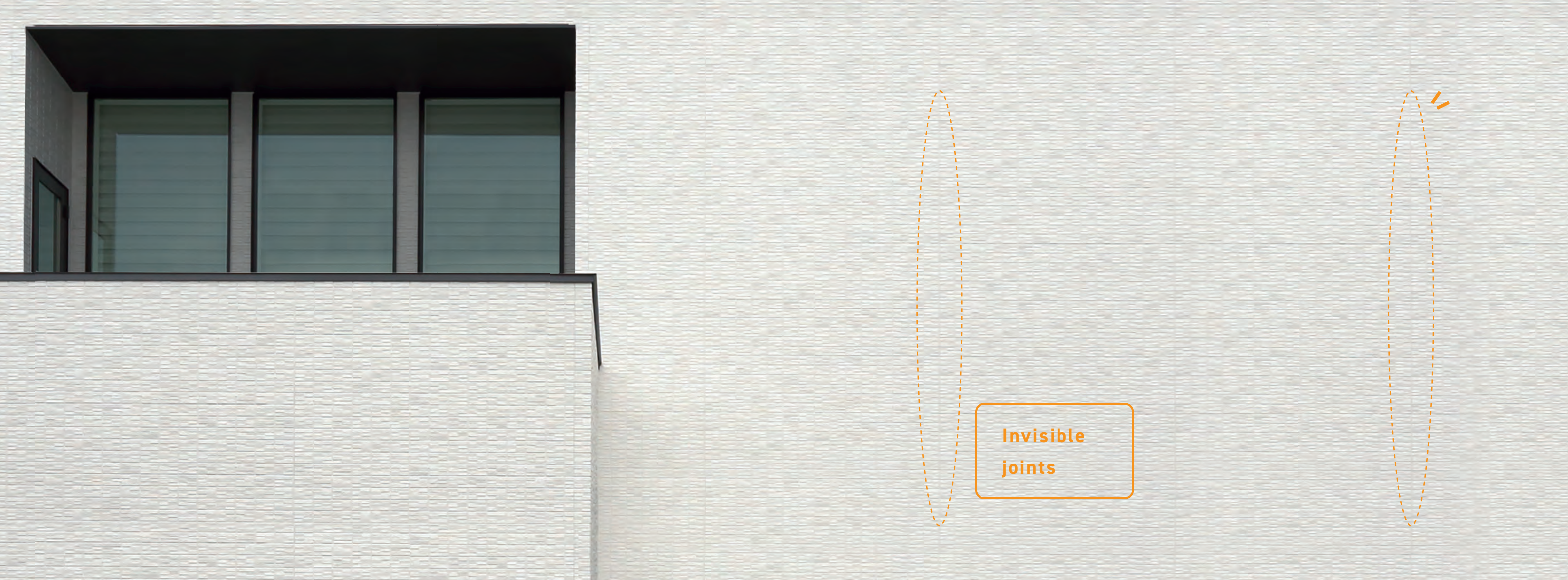
The horizontal edges of the panel are machined with a complementary tongue and groove profile. For the 1,820mm panels, the vertical edges have a tongue and groove profile as well. The 3,030mm panel has sealing between the left and right panels.

#### EX Series 3030

Dimensions: 455mm[W]×3030mm[L]  
 Thickness: 16mm







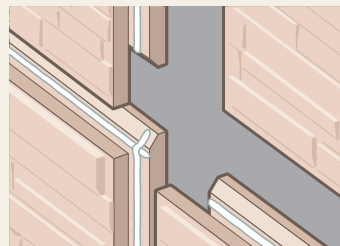
## The seamless wall surface is a distinctive feature of EX 1820

Sealant, to fill the joints between panels. By eliminating these sealant joints, we achieved to make the joints less noticeable and a wall surface with a sense of unity. Compared to the system with sealant finish, the difference is obvious.

The secret is “four-way jointing” that greatly reduces the number of sealant joints. Furthermore, there is no need to worry about blackened stains on the sealant or sealant breakage, so the beautiful appearance will last for a long time.

### What is “four-sided shiplap joint”

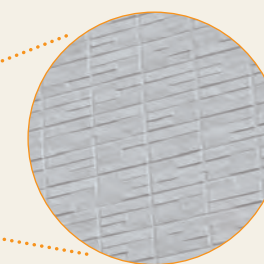
The panels are jointed together without sealant by tongue and groove on all four sides of the panel.



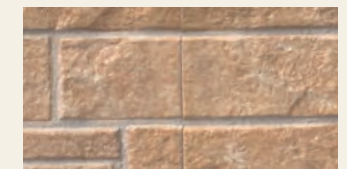
※Panels with SKU numbers beginning with EFF, ELS, EQS are excluded from the RUNNING BOND installation.

## Seamless (EX 1820) vs. Sealant Joints (EX 3030)

### Seamless design ※1 ※2

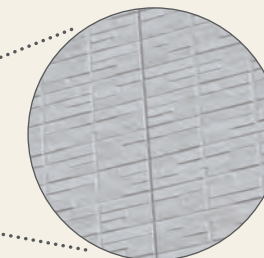
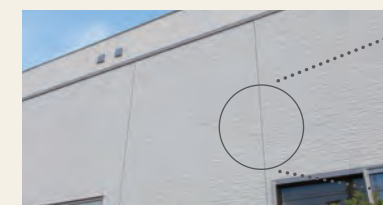


### Seamless joints

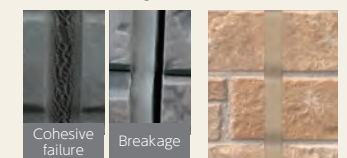


▲ Joints are inconspicuous comparing with sealant joints

### Sealant joints ※1



### Sealant joints



Cohesive failure and breakage may occur as sealants in general deteriorate over time

▲ Sealant joints

※1 The image is for illustrative purposes only.  
 ※2 Sealing may be required depending on the area being installed.





EFF151□X



EFF107□X

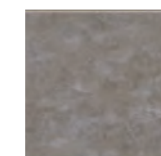


EFF107□X





EFF011□X



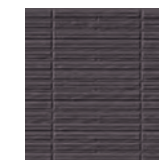
EFM511□X



EFM508□X



EFF013□X



EFF017□X







EFF151□X



EFF056□X



EFF031□X





EFF031□X



ELS533□X



EFF2323□X



EFF0921□X





ELS534□X



EFF2322□X



EFF161□X



EFF151□X

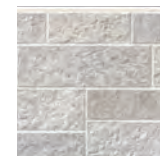




EFF1322□X



EFF191□X



EFF2222□X



EFF056□X



EFF154□X



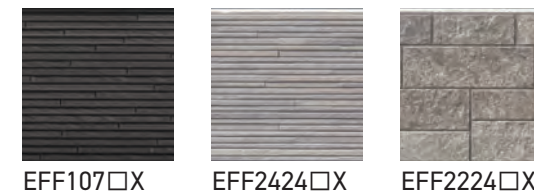
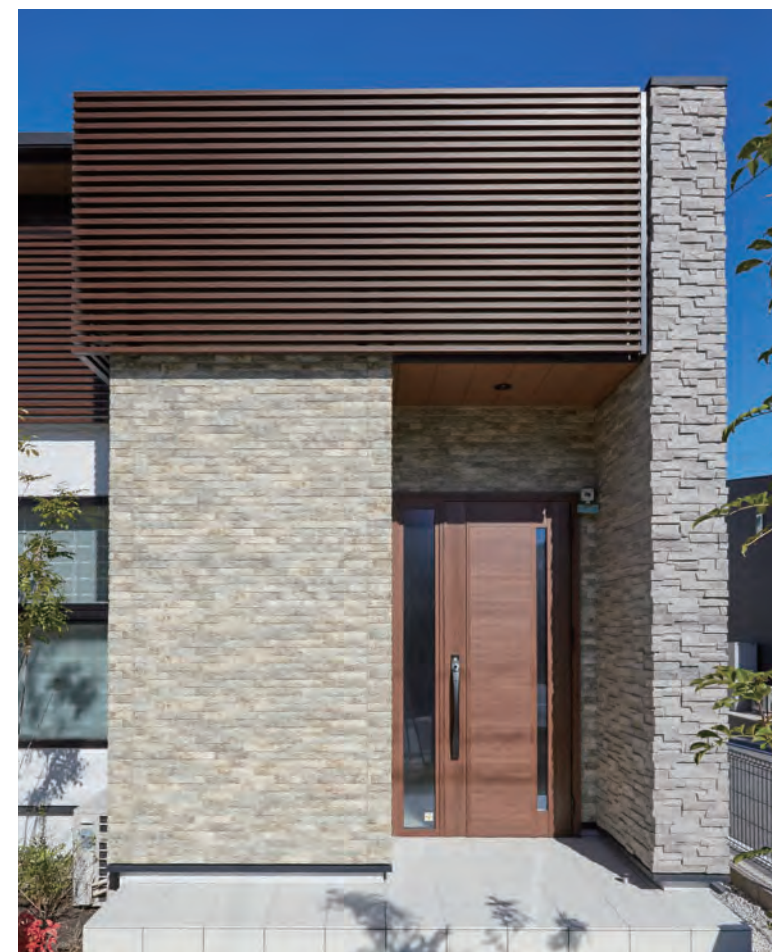
EFF151□X



EFF107□X









ELS193□  
(EFF193□X)



EFF166□X



ELS107□  
(EFF107□X)



ELS116□  
(EFF116□X)





EFF2224□X



EFF1224□X



EFF056□X

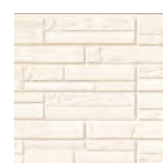


Before renovation



EFF2323□X





ELS521□



ELS533□X



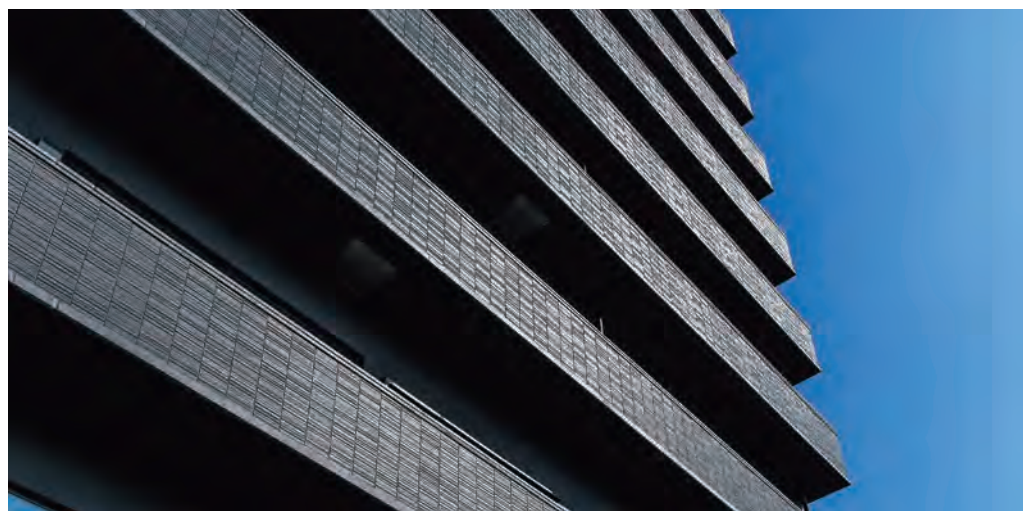
EQS9201□X





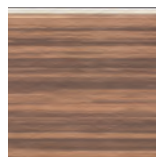


ELS533□X





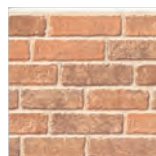
EJM502□X



EDM318□X



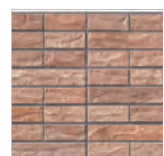
EFF1323□X







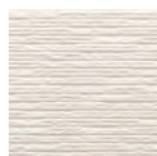
EFF211□



EFF2322□X



EFF2323□X



EF9051□



EFF0923□X

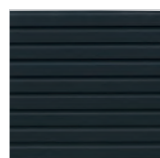




EDM1017□



EDM318□X



EDS2313□X



EDM318□X





EDM318□X



EFF161□X



EFF164□X



EJM502□X



EFM501□X



EFM503□X



EDM505□X



EDM1023□



EDM1014□







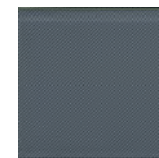
Photo A:Satoshi Asakawa



EDM316□X



ELS116□



1CP2G088

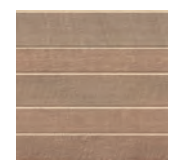


EFF2221□X



EFF0924□X

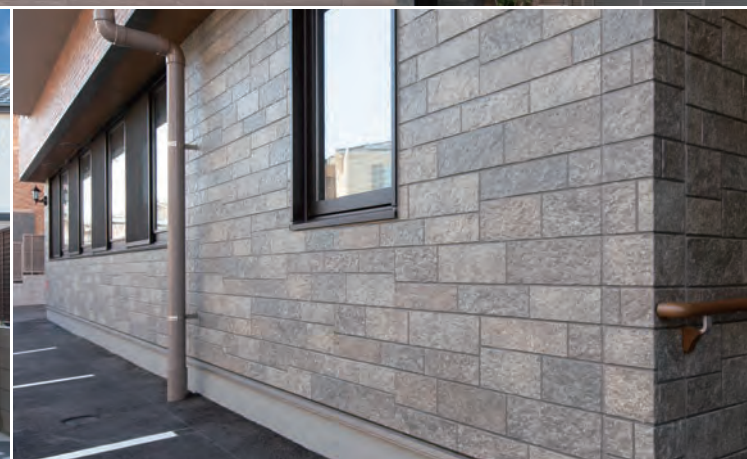




EFF1223□X



EFA5251□X



EFF2322□X

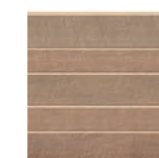


EFF2224□X

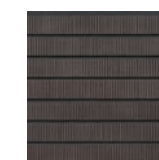




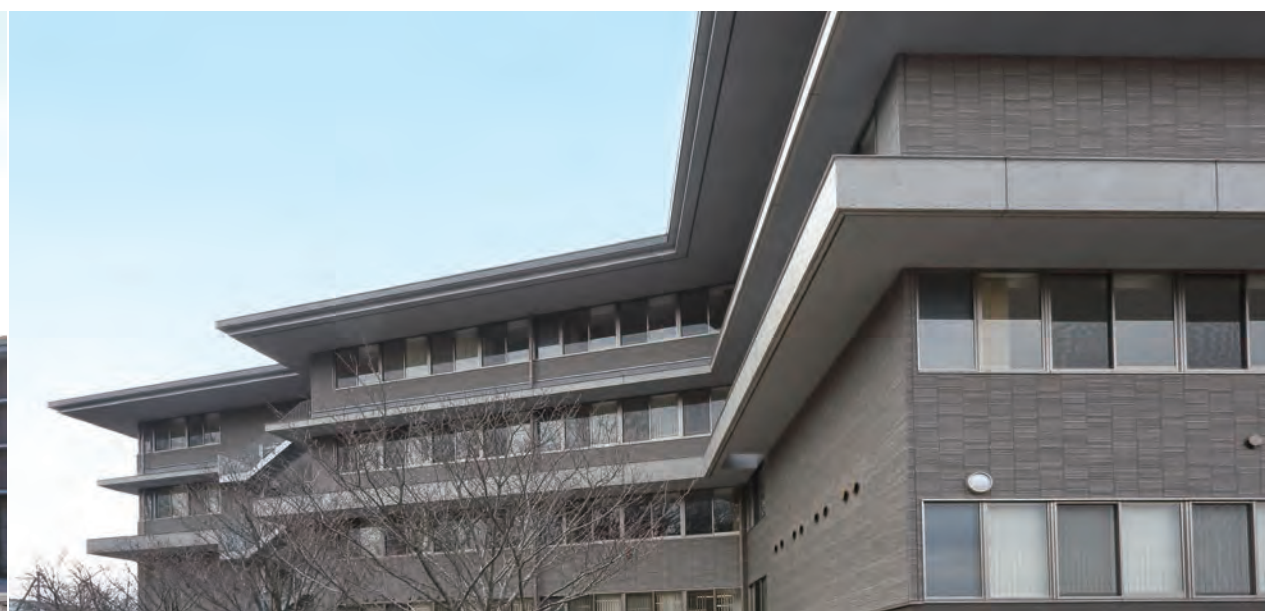
EFF0823□



EFF1223□X



EFF075□X







EFF5723□X



Photo by:Satake Ltd. Koichi Satake



EFF107 □ X



EFF051□X



EFF2322□X



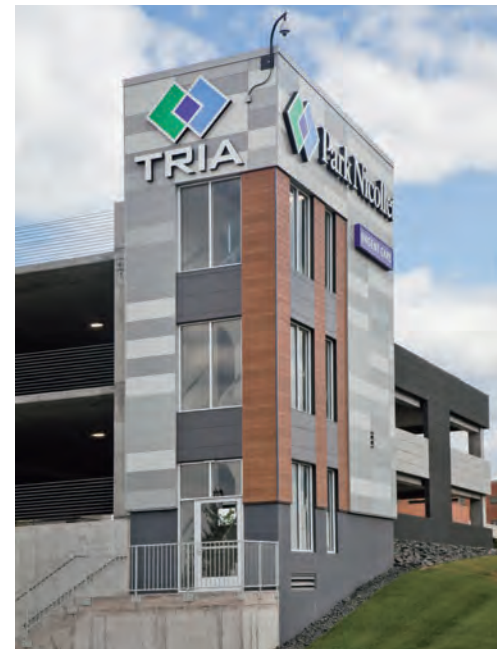
EFF161□X



EFF164□X









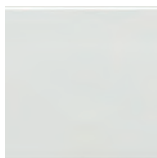


EJM501□X

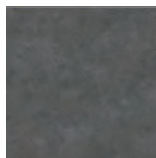




EQG5122□X



EPS241□X



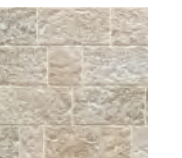
EFM511□X







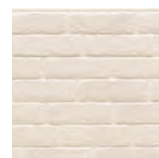
EJB8523□X



EQG6222□X



EPC247□X



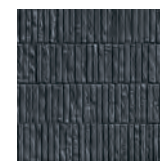
EPB324□X







EPS511□X



EPS513□X



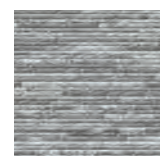
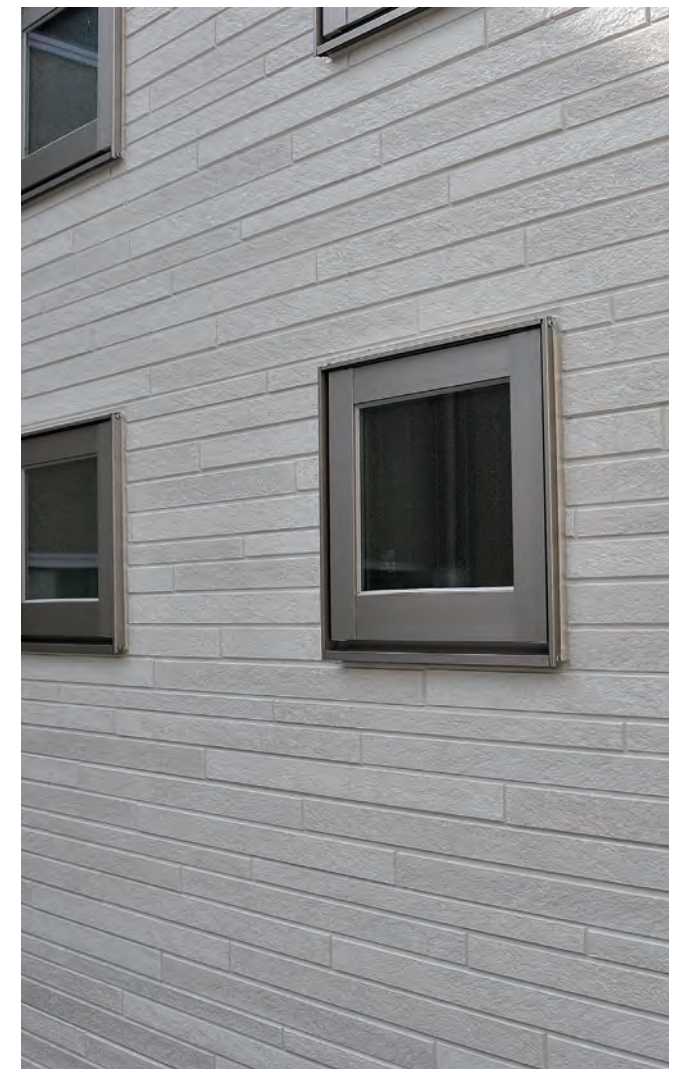
EPA321□X



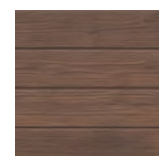




EPB181□X



EJB3624□X



EPS494□X



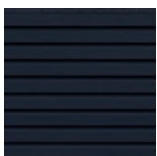




EPC241□X

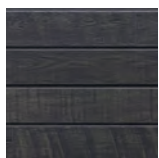


EDS2312□X



EPB342□X





EPC2411□X

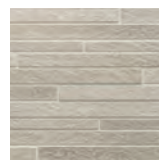


ELG731□X

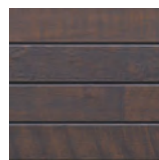


EPC601□X





EPB182□X



EPC2410□X



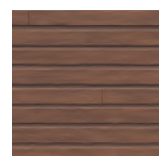
EJB8123□X







EKG226□X



EJB3521□X

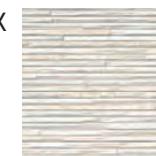


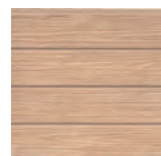




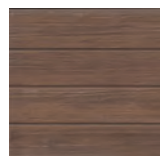
Photo by: TAKENAKA CORPORATION



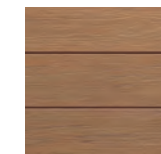
EPS521□X



EPS492□X



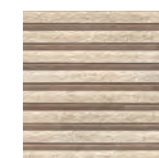
EPS494□X



EPC762□X



EPC763□X



EJB8523□X

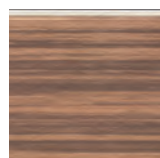
Photo by: Misonoo Taichi



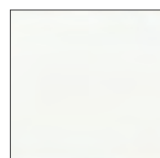




EJM502□X



EPS241□X



EFF165□



EPC246□X



YL141P



EPS241□X



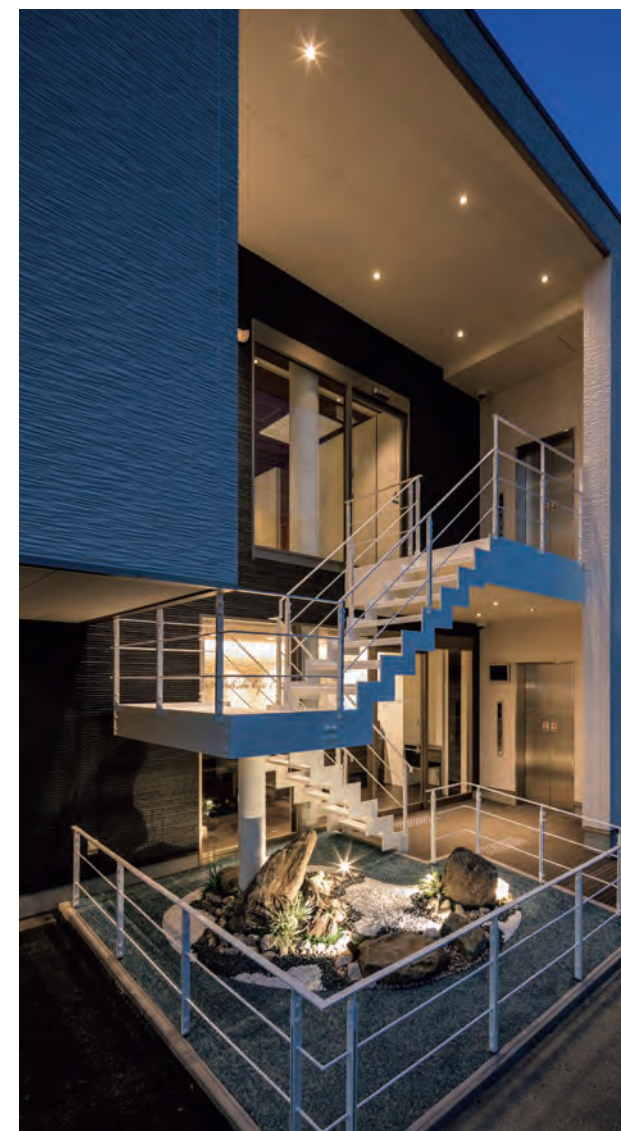




EJB4825□X



EJB4922□X



EPB347□X





EPS242□X



EDM318□X



EJB8522□X

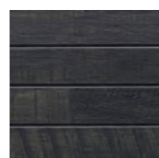


EKG221□X



EKG226□X

Photo by:Kawasumi-Kobayashi Kenji Photograph Office.



EPC2411□



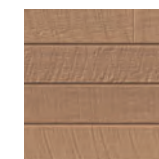




EPC248□X



EDM318□



EPC248□X



EPA326□X



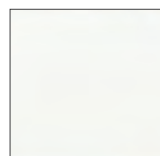




EJB8124□X



EQG6221□X



EPS241□X



EPS241□X

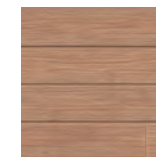




Before renovation



EJB8123□X



EPS493□



EPA326□X



Before renovation



EPS512□X







EPS495□X

Photo by:photo office overhaul



EPC432□X

